



# Kitchen Electric

OVEN


RANGE HOOD

STOVE


PRODUCT  
**CATALOGUE**

**2022**

Original Equipment Manufacture

 [www.sdjhl.com](http://www.sdjhl.com)

 [jhl@sdjhl.com](mailto:jhl@sdjhl.com)

 +86-757-2566 8381  
2566 8382

## Company Introduction



Foshan City Jinhuali Household Electrical Appliance Co., Ltd. is a professional manufacturer of small home appliances like range hood, fan, gas stoves and gas ovens. Our company is located in Foshan City, Guangdong Province which is an electric appliance manufacturing base in China. We are near Hong Kong, Macao and Guangzhou with convenient transportation by ship or bus.

Range hood is one of our best selling products. We specialize in different kinds of range hood, which is simple to use and of unique design. Excellent tempered glass is not only easy to clean but also elegant. Our stainless steel material is both strong and durable. 100% copper motor with strong suction, superior aluminum filter, 99% fume separation.

Our company owns a lot experienced professional technicians and administrators, so our company has built up a strict quality control system and have passed the certification of "3C", "CE", "CB", "SGS", "SOCAP", "SASO". "High Grade, High Quality" are our principles. In these years, our products have been well exported to all over the world and received customers' well recognition.

Learn from the past, look to the future, our company continues developing new products, new technologies and new crafts. We are trying to provide wonderful products to customers. We warmly welcome new friends to cooperate with us and OEM orders are accepted. Welcome to visit our factory for better understanding and cooperation.

## Contents



02-09

### Oven

1. Pay attention to cleaning when using the oven for the first time. Wipe the inside and outside of the oven with a clean damp cloth to remove some dust. Then you can use the high temperature to bake in an empty oven for a while, sometimes white smoke may appear, which is a normal phenomenon. Pay attention to ventilation and heat dissipation after baking.

2. The oven can be used normally after cleaning. Before baking any food, it is necessary to preheat to the specified temperature to meet the baking time on the recipe. It takes about 10 minutes to preheat the oven. If the oven is preheated for too long, it may also affect the service life of the oven.

3. Be careful of the oven being heated to avoid scalding. In addition to the internal high temperature, the shell and glass door are also very hot, so be careful when opening or closing the oven door to avoid being scalded by the glass door. When putting or taking out the baking tray, handle must be used. It is forbidden to touch the baking tray or baked food directly by hand. Do not touch the heater or other parts of the furnace chamber with your hands to avoid scalding.



10-17

### Range hood

Many users turn off the range hood after only a few minutes of cooking, which can't play its role. The right way to use it is to turn it on at the beginning of cooking, and turn it off only after 5-6 minutes after the whole cooking. Here, because of natural gas or liquefied petroleum gas, when the range hood is out of service, as long as the nitrogen compound is burned for a few minutes, it will exceed the standard by five times, and the carbon monoxide gas can exceed the standard by more than 65 times. Therefore, in the process of cooking, the range hood should work all the way, rather than start and stop at the same time. As for cooking, the reason why you still need to work for a few minutes is to discharge the harmful gas left in the kitchen to the maximum extent, so as not to leave it in the kitchen, so as to prevent it from endangering human health.



18-36

### Stove

1. The cooker is required to be installed in a well ventilated kitchen with a minimum distance of 1m from the steel cylinder, but the maximum length of the air inlet hose should not exceed 2m. No inflammables should be piled under and around the cooker.

2. The clear distance between the back of the stove and the wall shall not be less than 15 cm, and the clear distance between the side and the wall shall not be less than 20 cm; if the wall is inflammable material, a thermal insulation fireproof layer shall be pasted, and the excess of the fireproof layer shall not be less than 10 cm from both ends of the stove surface and the part below the stove, and the excess of the stove shall not be less than 80 cm.

3. The gap at the connection of air inlet pipe must be sealed. When connecting with rubber pipe, the rubber pipe must be put in place and clamped with clamp.



GAS/ELECTRIC  
COOKER



**MODEL: JHL.3-T026BH1**

Excellent tempered glass cook-panel  
 Enameled pan grate  
 Auto ignition  
 Stainless steel drip tray  
 N.W.: 7.5kg  
 G.W.: 8.0kg  
 Packing size: 775\*423\*107mm  
 40'HQ: 1850pcs



**MODEL: JHL.3-T026BH3**

Excellent tempered glass cook-panel  
 Enameled pan grate  
 Auto ignition  
 Stainless steel drip tray  
 N.W.: 7.5kg  
 G.W.: 8.0kg  
 Packing size: 775\*423\*107mm  
 40'HQ: 1850pcs



**MODEL: JHL.3-T026BH4**

Excellent tempered glass cook-panel  
 Enameled pan grate  
 Auto ignition  
 Stainless steel drip tray  
 N.W.: 7.5kg  
 G.W.: 8.0kg  
 Packing size: 775\*423\*107mm  
 40'HQ: 1850pcs



**MODEL: JHL.3-T026**

Excellent tempered glass cook-panel  
 Enameled pan grate  
 Auto ignition  
 Stainless steel drip tray  
 N.W.: 7.5kg  
 G.W.: 8.0kg  
 Packing size: 701\*423\*132mm  
 40'HQ: 1750pcs



**MODEL: JHL.3-T026**

Excellent tempered glass cook-panel  
 Enameled pan grate  
 Auto ignition  
 Stainless steel drip tray  
 N.W.: 7.5kg  
 G.W.: 8.0kg  
 Packing size: 701\*423\*132mm  
 40'HQ: 1750pcs



**MODEL: JHL.3-T026**

Excellent tempered glass cook-panel  
 Enameled pan grate  
 Auto ignition  
 Stainless steel drip tray  
 N.W.: 7.5kg  
 G.W.: 8.0kg  
 Packing size: 701\*423\*132mm  
 40'HQ: 1750pcs

## GAS/ELECTRIC COOKER



MODEL: JHL.3-T043S  
Excellent tempered glass cook-panel  
Enameled pan grate  
Auto ignition  
Stainless steel drip tray  
N.W.: 7.5kg  
G.W.: 8.0kg  
Packing size: 754\*423\*105mm  
40'HQ: 2060pcs



MODEL: JHL.3-T026C2  
Excellent tempered glass cook-panel  
Enameled pan grate  
Auto ignition  
Stainless steel drip tray  
N.W.: 7.5kg  
G.W.: 8.0kg  
Packing size: 754\*423\*105mm  
40'HQ: 2060pcs



MODEL: JHL.3-T026R  
Excellent tempered glass cook-panel  
Enameled pan grate  
Auto ignition  
Stainless steel drip tray  
N.W.: 7.5kg  
G.W.: 8.0kg  
Packing size: 754\*423\*105mm  
40'HQ: 2060pcs



MODEL: JHL.2-T026B  
Excellent tempered glass cook-panel  
Enameled pan grate  
Auto ignition  
Stainless steel drip tray  
N.W.: 7.5kg  
G.W.: 8.0kg  
Packing size: 754\*423\*105mm  
40'HQ: 2060pcs



MODEL: JHL.2-T038  
Excellent tempered glass cook-panel  
Enameled pan grate  
Auto ignition  
Stainless steel drip tray  
N.W.: 12kg  
G.W.: 13kg  
Packing size: 725\*450\*135mm  
40'HQ: 1650pcs



MODEL: JHL.3-T033C  
Excellent tempered glass cook-panel  
Enameled pan grate  
Auto ignition  
Stainless steel drip tray  
N.W.: 7.5kg  
G.W.: 8.0kg  
Packing size: 770\*480\*190mmmm  
40'HQ: 1650pcs



MODEL: JHL.2-T026L  
 Excellent tempered glass cook-panel  
 Enameled pan grate  
 Auto ignition  
 Stainless steel drip tray  
 N.W.: 7.5kg  
 G.W.: 8.0kg  
 Packing size: 701\*423\*132mm  
 40'HQ: 1750pcs



MODEL: JHL.2-T026  
 Excellent tempered glass cook-panel  
 Enameled pan grate  
 Auto ignition  
 Stainless steel drip tray  
 N.W.: 7.5kg  
 G.W.: 8.0kg  
 Packing size: 701\*423\*132mm  
 40'HQ: 1750pcs



MODEL: JHL.2-T029  
 Excellent tempered glass cook-panel  
 Enameled pan grate  
 Auto ignition  
 Stainless steel drip tray  
 N.W.: 7.5kg  
 G.W.: 8.0kg  
 Packing size: 701\*423\*132mm  
 40'HQ: 1750pcs



MODEL: JHL.2-T013C  
 Excellent tempered glass cook-panel  
 Enameled pan grate  
 Auto ignition  
 Stainless steel drip tray  
 N.W.: 7.5kg  
 G.W.: 8.0kg  
 Packing size: 701\*423\*132mm  
 40'HQ: 1750pcs



MODEL: JHL.2-T033C  
 Excellent tempered glass cook-panel  
 Enameled pan grate  
 Auto ignition  
 Stainless steel drip tray  
 N.W.: 7.5kg  
 G.W.: 8.0kg  
 Packing size: 701\*423\*132mm  
 40'HQ: 1750pcs



MODEL: JHL.2-T055C  
 Excellent tempered glass cook-panel  
 Enameled pan grate  
 Auto ignition  
 Stainless steel drip tray  
 N.W.: 7.5kg  
 G.W.: 8.0kg  
 Packing size: 754\*423\*105mm  
 40'HQ: 2060pcs

## GAS/ELECTRIC COOKER



MODEL: JHL.3-T026SA  
Excellent tempered glass cook-panel  
Enameled pan grate  
Auto ignition  
Stainless steel drip tray  
N.W.: 7.5kg  
G.W.: 8.0kg  
Packing size: 754\*423\*105mm  
40'HQ: 2060pcs



MODEL: JHL.2-T026SA  
Excellent tempered glass cook-panel  
Enameled pan grate  
Auto ignition  
Stainless steel drip tray  
N.W.: 7.5kg  
G.W.: 8.0kg  
Packing size: 754\*423\*105mm  
40'HQ: 2060pcs



MODEL: JHL.4-T001C  
Excellent tempered glass cook-panel  
Enameled pan grate  
Auto ignition  
Stainless steel drip tray  
N.W.: 12kg  
G.W.: 13kg  
Packing size: 710\*565\*145mm  
40'HQ: 1150pcs



MODEL: JHL.4-T001A  
Excellent tempered glass cook-panel  
Enameled pan grate  
Auto ignition  
Stainless steel drip tray  
N.W.: 12kg  
G.W.: 13kg  
Packing size: 710\*565\*145mm  
40'HQ: 1150pcs





MODEL: JHL.4-L04B  
 Color coating stove panel  
 Four brass burner caps  
 Auto ignition  
 G.W.: 3.75kg  
 Packing size: 515\*470\*100mm  
 40'HQ: 2530pcs



MODEL: JHL.4-L04  
 Color coating stove panel  
 Four enamel burner caps  
 Auto ignition  
 G.W.: 3.75kg  
 Packing size: 515\*470\*100mm  
 40'HQ: 2530pcs



MODEL: JHL.3-L03B  
 Color coating stove panel  
 Three brass burner caps  
 Auto ignition  
 G.W.: 3.53kg  
 Packing size: 565\*315\*100mm  
 40'HQ: 3350pcs



MODEL: JHL.3-L03  
 Color coating stove panel  
 Three enamel burner caps  
 Auto ignition  
 G.W.: 3.53kg  
 Packing size: 565\*315\*100mm  
 40'HQ: 3350pcs



MODEL: JHL.2-L02B  
 Color coating stove panel  
 Two brass burner caps  
 Auto ignition  
 G.W.: 2.3kg  
 Packing size: 565\*315\*100mm  
 40'HQ: 3350pcs



MODEL: JHL.2-L02  
 Color coating stove panel  
 Two enamel burner caps  
 Auto ignition  
 G.W.: 2.3kg  
 Packing size: 565\*315\*100mm  
 40'HQ: 3350pcs

## GAS/ELECTRIC COOKER



MODEL: JHL.4-L04HB  
 Color coating stove panel  
 Four brass burner caps  
 Auto ignition  
 G.W.: 6.3kg  
 Packing size: 570\*510\*175mm  
 40'HQ: 1350pcs



MODEL: JHL.2-T030  
 Stainless steel cooker-panel  
 Auto ignition  
 N.W.: 7kg  
 G.W.: 8kg  
 Body size: 710\*400\*100mm  
 Packing size: 720\*425\*115mm  
 40'HQ: 1900pcs



MODEL: JHL.2-T008  
 Stainless steel cooker-panel  
 Auto ignition  
 N.W.: 7kg  
 G.W.: 8kg  
 Body size: 710\*400\*110mm  
 Packing size: 720\*422\*123mm  
 40'HQ: 1715pcs



MODEL: JHL.3-T029  
 Stainless steel cooker-panel  
 Auto ignition  
 N.W.: 7kg  
 G.W.: 8kg  
 Body size: 710\*400\*110mm  
 Packing size: 720\*422\*123mm  
 40'HQ: 1715pcs



MODEL: JHL.2-T004  
 Stainless steel cooker-panel  
 Auto ignition  
 N.W.: 7kg  
 G.W.: 8kg  
 Body size: 710\*400\*110mm  
 Packing size: 745\*420\*125mm  
 40'HQ: 1750pcs



MODEL: JHL.3-T033  
 Stainless steel cooker-panel  
 Auto ignition  
 N.W.: 7kg  
 G.W.: 8kg  
 Body size: 695\*380\*95mm  
 Packing size: 705\*385\*98mm  
 40'HQ: 2600pcs



MODEL: JHL.3-T016  
 Stainless steel cooker-panel  
 Auto ignition  
 N.W.: 7kg  
 G.W.: 8kg  
 Body size:695\*380\*95mm  
 Packing size: 705\*385\*98mm  
 40'HQ: 2600pcs



MODEL: JHL.3-T016H2  
 Stainless steel cooker-panel  
 Auto ignition  
 N.W.: 7kg  
 G.W.: 8kg  
 Body size:695\*380\*95mm  
 Packing size: 705\*385\*98mm  
 40'HQ: 2600pcs



MODEL: JHL.2-T009  
 Stainless steel cooker-panel  
 Auto ignition  
 N.W.: 7kg  
 G.W.: 8kg  
 Body size:695\*380\*95mm  
 Packing size: 715\*385\*98mm  
 40'HQ: 2600pcs



MODEL: JHL.2-T065  
 Stainless steel cooker-panel  
 Auto ignition  
 N.W.: 7kg  
 G.W.: 8kg  
 Body size:690\*370\*110mm  
 Packing size: 715\*385\*98mm  
 40'HQ: 2600pcs



MODEL: JHL.2-T02T  
 Stainless steel cooker-panel  
 Auto ignition  
 N.W.: 7kg  
 G.W.: 8kg  
 Body size:690\*370\*110mm  
 Packing size: 715\*385\*98mm  
 40'HQ: 2600pcs



MODEL: JHL.2-T014  
 Coated cook-panel  
 Auto ignition  
 N.W.: 6kg  
 G.W.: 7kg  
 Body size:705\*380\*95mm  
 Packing size: 710\*385\*98mm  
 40'HQ: 2600pcs

## GAS/ELECTRIC COOKER



MODEL: JHL.2-T02R  
 Stainless steel cooker-panel  
 Auto ignition  
 N.W.: 7kg  
 G.W.: 8kg  
 Body size: 695\*380\*95mm  
 Packing size: 715\*410\*100mm  
 40'HQ: 2600pcs



MODEL: JHL.2-T028  
 Coated cooker-panel  
 Auto ignition  
 N.W.: 7kg  
 G.W.: 8kg  
 Body size: 710\*380\*95mm  
 Packing size: 715\*385\*98mm  
 40'HQ: 2600pcs



MODEL: JHL.3-T024  
 Coated cooker-panel  
 Auto ignition  
 N.W.: 7kg  
 G.W.: 8kg  
 Body size: 710\*400\*95mm  
 Packing size: 715\*410\*100mm  
 40'HQ: 2600pcs



MODEL: JHL.2-T01T  
 Coated cooker-panel  
 Auto ignition  
 N.W.: 7kg  
 G.W.: 8kg  
 Body size: 690\*370\*95mm  
 Packing size: 715\*385\*98mm  
 40'HQ: 2600pcs



MODEL: JHL.2-T034  
 Stainless steel cooker-panel  
 Auto ignition  
 N.W.: 7kg  
 G.W.: 8kg  
 Body size: 705\*380\*70mm  
 Packing size: 715\*385\*75mm  
 40'HQ: 3200pcs



MODEL: JHL.2-T001  
 Stainless steel cooker-panel  
 Auto ignition  
 N.W.: 7kg  
 G.W.: 8kg  
 Body size: 695\*380\*95mm  
 Packing size: 715\*385\*98mm  
 40'HQ: 2600pcs



MODEL: JHL.3-T021X  
 Stainless steel cooker-panel  
 Auto ignition  
 N.W.: 7kg  
 G.W.: 8kg  
 Body size:715\*380\*80mm  
 Packing size: 715\*410\*100mm  
 40'HQ: 2500pcs



MODEL: JHL.3-T018X  
 Stainless steel cooker-panel  
 Auto ignition  
 N.W.: 7kg  
 G.W.: 8kg  
 Body size:715\*380\*80mm  
 Packing size: 720\*385\*85mm  
 40'HQ: 2600pcs



MODEL: JHL.3-T018  
 Stainless steel cooker-panel  
 Auto ignition  
 N.W.: 7kg  
 G.W.: 8kg  
 Body size:715\*380\*80mm  
 Packing size: 720\*385\*85mm  
 40'HQ: 2600pcs



MODEL: JHL.3-T017  
 Stainless steel cooker-panel  
 Auto ignition  
 N.W.: 7kg  
 G.W.: 8kg  
 Body size:715\*380\*80mm  
 Packing size: 720\*385\*85mm  
 40'HQ: 2600pcs



MODEL: JHL.2-T012  
 Stainless steel cooker-panel  
 Auto ignition  
 N.W.: 7kg  
 G.W.: 8kg  
 Body size:710\*380\*95mm  
 Packing size: 720\*385\*98mm  
 40'HQ: 2600pcs



MODEL: JHL.2-T027  
 Stainless steel cooker-panel  
 Auto ignition  
 N.W.: 7kg  
 G.W.: 8kg  
 Body size:700\*395\*110mm  
 Packing size: 715x405x123mm  
 40'HQ: 1930pcs

## GAS/ELECTRIC COOKER



**MODEL: JHL.1-A10**

Excellent tempered glass cook-panel  
Auto Ignition  
N.W.: 4kg  
G.W.: 5kg  
Body size: 380\*300\*115mm  
Packing size: 373\*405\*130mm  
40'HQ: 4290pcs



**MODEL: JHL.1-A12**

Excellent tempered glass cook-panel  
Auto Ignition  
N.W.: 4kg  
G.W.: 5kg  
Body size: 380\*300\*115mm  
Packing size: 373\*405\*130mm  
40'HQ: 4290pcs



**MODEL: JHL.1-K1AB**

Coated cooker-panel  
Auto Ignition  
N.W.: 4kg  
G.W.: 5kg  
Body size: 340\*290\*85mm  
Packing size: 355\*300\*90mm  
40'HQ: 6702pcs



**MODEL: JHL.1-A01**

Stainless steel cooker-panel  
Auto Ignition  
N.W.: 3kg  
G.W.: 3.5kg  
Body size: 350\*280\*105mm  
Packing size: 375\*295\*120mm  
40'HQ: 5900pcs



**MODEL: JHL.1-A02**

Stainless steel cooker-panel  
Auto Ignition  
N.W.: 3kg  
G.W.: 3.5kg  
Body size: 350\*280\*105mm  
Packing size: 375\*295\*120mm  
40'HQ: 6500pcs



**MODEL: JHL.1-A03**

Coated cooker-panel  
Auto Ignition  
N.W.: 3kg  
G.W.: 3.5kg  
Body size: 350\*280\*105mm  
Packing size: 375\*295\*120mm  
40'HQ: 6500pcs



**MODEL: JHL.1-A04**

Coated cooker-panel  
Auto Ignition  
N.W.: 3kg  
G.W.: 3.5kg  
Body size: 350\*280\*105mm  
Packing size: 375\*295\*120mm  
40'HQ: 6500pcs



**MODEL: JHL.1-A05**

Stainless steel cooker-panel  
Auto Ignition  
N.W.: 3kg  
G.W.: 3.5kg  
Body size: 300\*380\*120mm  
Packing size: 315\*405\*130mm  
40'HQ: 6500pcs



**MODEL: JHL.1-A09**

Stainless steel cooker-panel  
Auto Ignition  
N.W.: 3kg  
G.W.: 3.5kg  
Body size: 300\*380\*120mm  
Packing size: 315\*405\*130mm  
40'HQ: 4290pcs



## GAS/ELECTRIC COOKER



MODEL: JHL-715E2  
Excellent tempered glass cook-panel  
Enameled pan grate  
Pulse ignition  
Safety device  
N.W.: 15kg  
G.W.: 18kg  
Packing size: 835x560x170mm  
40'HQ: 840pcs



MODEL: JHL-625  
Excellent tempered glass cooker-panel  
Enameled pan grate  
Pulse ignition  
Safety device  
N.W.: 14kg  
G.W.: 15.5kg  
Packing size: 630x560x170mm  
40'HQ: 955pcs



MODEL: JHL-625E  
Excellent tempered glass cooker-panel  
Enameled pan grate  
Pulse ignition  
Safety device  
N.W.: 14kg  
G.W.: 15.5kg  
Packing size: 650x570x145mm  
40'HQ: 865pcs



MODEL: JHL-715-8  
Stainless steel cooker-panel  
Iron pan grate  
Pulse ignition  
Safety device  
N.W.: 15kg  
G.W.: 16kg  
Packing size: 820x560x170mm  
40'HQ: 855pcs





MODEL: JHL.2-005  
 Stainless steel cooker-panel  
 Cast iron grate  
 Pulse ignition  
 Safety device  
 N.W.: 7kg  
 G.W.: 8kg  
 Packing size: 745x430x180mm  
 40'HQ: 1010pcs



MODEL: JHL.3-60E  
 Excellent tempered glass cooker-panel  
 Electroplate grate  
 Automatic Electronic ignition  
 Safety device  
 N.W.: 10kg  
 G.W.: 11kg  
 Packing size: 825x480x185mm  
 40'HQ: 928pcs



MODEL: JHL.2-007G  
 Excellent tempered glass cooker-panel  
 Electroplate grate  
 Automatic Electronic ignition  
 Safety device  
 N.W.: 7kg  
 G.W.: 8kg  
 Packing size: 745x430x180mm  
 40'HQ: 1010pcs





MODEL: JHL-715-1  
Stainless steel cooker-panel  
Iron pan grate  
Pulse Ignition  
Safety device  
N.W.: 15kg  
G.W.: 16kg  
Packing size: 920x560x177mm  
40'HQ: 730pcs



MODEL: JHL-715-2  
Stainless steel cooker-panel  
Iron pan grate  
Pulse Ignition  
Safety device  
N.W.: 15kg  
G.W.: 16kg  
Packing size: 920x560x177mm  
40'HQ: 730pcs



MODEL: JHL-715-4  
Stainless steel cooker-panel  
Iron pan grate  
Pulse ignition  
Safety device  
N.W.: 15kg  
G.W.: 16kg  
Packing size: 920x560x177mm  
40'HQ: 730pcs



MODEL: JHL-715-5  
Stainless steel cooker-panel  
Iron pan grate  
Pulse ignition  
Safety device  
N.W.: 15kg  
G.W.: 16kg  
Packing size: 920x560x177mm  
40'HQ: 730pcs



MODEL: JHL-715-7  
 Stainless steel cooker-panel  
 Cast iron grate  
 Pulse ignition  
 Safety device  
 N.W.: 7kg  
 G.W.: 8kg  
 Packing size: 920x560x177mm  
 40'HQ: 730pcs



MODEL: JHL-624-4  
 Stainless steel cooker-panel  
 Iron pan grate  
 Automatic Pulse ignition  
 Safety device  
 N.W.: 8.0kg  
 G.W.: 9.0kg  
 Packing size: 625x545x170mm  
 40'HQ: 1150pcs



MODEL: JHL-624-3  
 Stainless steel cooker-panel  
 Iron pan grate  
 Automatic Pulse ignition  
 Safety device  
 N.W.: 8.0kg  
 G.W.: 9.0kg  
 Packing size: 625x545x170mm  
 40'HQ: 1150pcs



MODEL: JHL-624-E  
 Stainless steel cooker-panel  
 Automatic Pulse ignition  
 Safety device  
 N.W.: 9.5kg  
 G.W.: 10.5kg  
 Packing size: 625x545x170mm  
 40'HQ: 1150pcs

## GAS/ELECTRIC COOKER



JHL-835GET  
Brass burner cap  
Electrical hotplates: 1000W\*1500W  
Stainless steel body  
Auto ignition  
Tempered glass lid  
Burner for more durability and efficiency  
Low gas consumption  
Packing size: 925x640x258mm  
40'HQ: 430pcs



JHL-835GET3  
Brass burner cap  
Stainless steel body  
Auto ignition  
Tempered glass lid  
Burner for more durability and efficiency  
Low gas consumption  
Packing size: 925x640x258mm  
40'HQ: 430pcs



JHL-835GET2  
Brass burner cap  
Electrical hotplates: 1500W  
Stainless steel body  
Auto ignition  
Tempered glass lid  
Burner for more durability and efficiency  
Low gas consumption  
Packing size: 925x575x255mm  
40'HQ: 430pcs



JHL-710GET  
Brass burner cap  
Stainless steel body  
Auto ignition  
Tempered glass lid  
Burner for more durability and efficiency  
Low gas consumption  
Packing size: 660x680x270mm  
40'HQ: 550pcs



JHL-600GET  
 Brass burner cap  
 Electrical hotplates: 1000W\*1500W  
 Stainless steel body  
 Auto ignition  
 Tempered glass lid  
 Burner for more durability and efficiency  
 Low gas consumption  
 Packing size: 615x560x250mm  
 40'HQ: 785pcs



JHL-620GET  
 Brass burner cap  
 Stainless steel body  
 Auto ignition  
 Tempered glass lid  
 Burner for more durability and efficiency  
 Low gas consumption  
 Packing size: 615x560x250mm  
 40'HQ: 785pcs

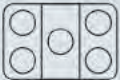


JHL-300GET  
 Brass burner cap  
 Stainless steel body  
 Auto ignition  
 Tempered glass lid  
 Burner for more durability and efficiency  
 Low gas consumption  
 Packing size: 750x455x200mm  
 40'HQ: 535pcs



# Gas/Electrical OVEN





MODEL: JHL-L905  
 Five copper gas burners:  
 3200W, 2400W\*2, 1880W\*2  
 Oven capacity: 95.6L  
 Oven power: 3980W  
 Pulse ignition  
 Double warmer glass oven door  
 Temperature controller  
 Packing size: 950\*675\*840mm  
 40'HQ 124pcs



MODEL: JHL-906  
 4 copper gas burners:  
 3200W\*2, 1800W\*2  
 2 electrical hot plates:  
 1500W, 1000W  
 Oven capacity: 95.6L  
 Oven power: 3980W  
 Pulse ignition  
 Double warmer glass oven door  
 Temperature controller  
 Packing size: 950\*675\*865mm  
 40'HQ 124pcs



MODEL: JHL-L906  
 Four copper gas burners:  
 3200W\*2, 1800W\*2  
 Two electrical hot plates:  
 1500W, 1000W  
 Oven capacity: 95.6L  
 Oven power: 3980W  
 Pulse ignition  
 Double warmer glass oven door  
 Temperature controller  
 Packing size: 950\*675\*840mm  
 40'HQ 124pcs



MODEL: JHL-906E  
 Four copper gas burners:  
 3200W\*2, 1800W\*2  
 Two electrical hot plates:  
 1500W, 1000W  
 Oven capacity: 95.6L  
 Oven power: 3980W  
 Pulse ignition  
 Double warmer glass oven door  
 Temperature controller  
 Packing size: 950\*675\*865mm  
 40'HQ 124pcs



MODEL: JHL-905  
 Five copper gas burners:  
 3200W, 2400W\*2, 1880W\*2  
 Oven capacity: 95.6L  
 Oven power: 3980W  
 Pulse ignition  
 Double warmer glass oven door  
 Temperature controller  
 Packing size: 950\*675\*865mm  
 40'HQ 124pcs



MODEL: JHL-906  
 4 copper gas burners:  
 3200W\*2, 1800W\*2  
 2 electrical hot plates:  
 1500W, 1000W  
 Oven capacity: 95.6L  
 Oven power: 3980W  
 Pulse ignition  
 Double warmer glass oven door  
 Temperature controller  
 Packing size: 950\*675\*865mm  
 40'HQ 124pcs



MODEL: JHL-835  
 Five sabaf gas burners:  
 3200W\*2, 2400W  
 1880W\*2  
 Oven capacity: 51L  
 Oven power: 3500W  
 Pulse ignition  
 Double warmer glass oven door  
 Temperature controller  
 Packing size: 850\*560\*890mm  
 40'HQ 162pcs



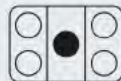
MODEL: JHL-835  
 Four sabaf gas burners:  
 3200W\*2, 2400W  
 1880W\*2  
 Oven capacity: 51L  
 Oven power: 3500W  
 Pulse ignition  
 Double warmer glass oven door  
 Temperature controller  
 Packing size: 850\*560\*890mm  
 40'HQ 162pcs



MODEL: JHL-905E  
 Four copper gas burners:  
 3200W\*2, 1800W\*2  
 electrical hot plates: 1500W  
 Oven capacity: 95.6L  
 Oven power: 3980W  
 Pulse ignition  
 Double warmer glass oven door  
 Temperature controller  
 Packing size: 950\*675\*865mm  
 40'HQ 124pcs



MODEL: JHL-906E  
 Four copper gas burners:  
 3200W\*2, 1800W\*2  
 Two electrical hot plates:  
 1500W, 1000W  
 Oven capacity: 95.6L  
 Oven power: 3980W  
 Pulse ignition  
 Double warmer glass oven door  
 Temperature controller  
 Packing size: 950\*675\*865mm  
 40'HQ 124pcs



MODEL: JHL-835E  
 Five sabaf gas burners:  
 3200W\*2, 2400W  
 Electrical hot plates: 1000W  
 Oven capacity: 51L  
 Oven power: 3500W  
 Pulse ignition  
 Double warmer glass oven door  
 Temperature controller  
 Packing size: 850\*560\*890mm  
 40'HQ 162pcs





MODEL: JHL-835  
 Five sabaf gas burners:  
 3200W\*2,2400W  
 1880W\*2  
 Oven capacity: 51L  
 Oven power: 3500W  
 Pulse ignition  
 Double warmer glass oven door  
 Temperature controller  
 Packing size: 850\*560\*890mm  
 40'HQ 162pcs



MODEL: JHL-835  
 Four sabaf gas burners:  
 3200W\*2,2400W  
 1880W\*2  
 Oven capacity: 51L  
 Oven power: 3500W  
 Pulse ignition  
 Double warmer glass oven door  
 Temperature controller  
 Packing size: 850\*560\*890mm  
 40'HQ 162pcs



MODEL: JHL-760  
 Six copper gas burners:  
 2400W\*2 & 1800W\*2  
 1500W\*2  
 Oven capacity: 90L  
 Oven power: 3980W  
 Pulse ignition  
 Double warmer glass oven door  
 Temperature glass lid  
 Packing size: 820\*685\*970mm  
 40'HQ 162pcs



MODEL: JHL-760  
 Six copper gas burners:  
 2400W\*2 & 1800W\*2  
 1500W\*2  
 Oven capacity: 90L  
 Oven power: 3980W  
 Pulse ignition  
 Double warmer glass oven door  
 Temperature glass lid  
 Packing size: 820\*685\*970mm  
 40'HQ 162pcs



MODEL: JHL-835E  
 Five sabaf gas burners:  
 3200W\*2,2400W  
 Electrical hot plates: 1000W  
 Oven capacity: 51L  
 Oven power: 3500W  
 Pulse ignition  
 Double warmer glass oven door  
 Temperature controller  
 Packing size: 850\*560\*890mm  
 40'HQ 162pcs



MODEL: JHL-760  
 Four copper gas burners:  
 3200W\*2,1800W\*2  
 Electrical hot plates: 1500W  
 Oven capacity: 90L  
 Oven power: 3980W  
 Pulse ignition  
 Double warmer glass oven door  
 Temperature glass lid  
 Packing size: 820\*685\*970mm  
 40'HQ 162pcs



MODEL: JHL-760B  
 Four copper gas burners:  
 2400W\*2 & 1800W\*2  
 two electrical hot plates:  
 1000W\*2  
 Oven capacity: 90L  
 Oven power: 3980W  
 Pulse ignition  
 Double warmer glass oven door  
 Temperature controller  
 Packing size: 850\*560\*890mm  
 40'HQ 162pcs



MODEL: JHL-710  
 Four copper gas burners:  
 2400W\*2  
 1880W\*2  
 Oven capacity: 63L  
 Oven power: 3500W  
 Pulse ignition  
 Double warmer glass oven door  
 Temperature controller  
 Packing size: 640\*670\*870mm  
 40'HQ 171pcs



MODEL: JHL-710E  
 Three sabaf gas burners:  
 3200W,2400W,1880W  
 One electrical hotplates:  
 1500w  
 Oven capacity: 63L  
 Oven power: 3500W  
 Pulse ignition  
 Double warmer glass oven door  
 Temperature controller  
 Packing size: 640\*670\*870mm  
 40'HQ 171pcs



MODEL: JHL-L600  
 Four copper gas burners:  
 2400W\*2,1800W\*2  
 Oven capacity: 63L  
 Oven power: 3500w  
 Metallic thermograph  
 Tempered glass lid  
 Double warmer glass oven door  
 Packing size: 620\*655\*835mm  
 40'HQ 171pcs



MODEL: JHL-L600E  
 Three sabaf gas burners:  
 3200W,2400W,1880W  
 One electrical hotplates:  
 1500w  
 Oven capacity: 63L  
 Oven power: 3500W  
 Pulse ignition  
 Double warmer glass oven door  
 Temperature controller  
 Packing size: 640\*670\*870mm  
 40'HQ 171pcs



MODEL: JHL-710E2  
 Two copper gas burners:  
 2400W,1800W  
 two electrical hotplates:  
 1500W,1000W  
 Oven capacity: 63L  
 Oven power: 3500W  
 Pulse ignition  
 Double warmer glass oven door  
 Temperature controller  
 Packing size: 640\*670\*870mm  
 40'HQ 171pcs



MODEL: JHL-710E4  
 Four electrical hotplates:  
 1500W\*2,1000W\*2  
 Oven capacity: 63L  
 Oven power: 3500W  
 Double warmer glass oven door  
 Temperature controller  
 Packing size: 640\*670\*870mm  
 40'HQ 171pcs



MODEL: JHL-L600E2  
 Two copper gas burners:  
 2400W,1800W  
 two electrical hotplates:  
 1500W,1000W  
 Oven capacity: 63L  
 Oven power: 3500W  
 Pulse ignition  
 Double warmer glass oven door  
 Temperature controller  
 Packing size: 640\*670\*870mm  
 40'HQ 171pcs



MODEL: JHL-L600E4  
 Four electrical hotplates:  
 1500W\*2,1000W\*2  
 Oven capacity: 63L  
 Oven power: 3500W  
 Double warmer glass oven door  
 Temperature controller  
 Packing size: 640\*670\*870mm  
 40'HQ 171pcs



**MODEL: JHL-L500**  
 Four copper burners:  
 2400W\*2,1800W\*2  
 Oven capacity: 51L  
 Oven power: 3500W  
 Metallic thermograph  
 Iron lid  
 Single warmer glass oven door  
 Packing size: 610\*520\*850mm  
 40'HQ 262pcs



**MODEL: JHL-L500E**  
 Three sabaf gas burners:  
 3200W,2400W,1880W  
 One electrical hotplates:  
 1500w  
 Oven capacity: 51L  
 Oven power: 3500W  
 Metallic thermograph  
 Iron lid  
 Single warmer glass oven door  
 Packing size: 610\*520\*850mm  
 40'HQ 262pcs



**MODEL: JHL-510**  
 Four copper gas burners:  
 1800W\*2,1200W\*2  
 Oven capacity: 51L  
 Oven power: 2630W  
 Tempered glass lid  
 Double warmer glass oven door  
 Packing size: 480\*560\*870mm  
 40'HQ 286pcs



**MODEL: JHL-510E**  
 Three sabaf gas burners:  
 3200W,2400W,1880W  
 One electrical hotplates:  
 1500w  
 Oven capacity: 51L  
 Oven power: 2630W  
 Tempered glass lid  
 Double warmer glass oven door  
 Packing size: 480\*560\*870mm  
 40'HQ 286pcs



**MODEL: JHL-L500E2**  
 Two copper gas burners:  
 2400W,1800W  
 two electrical hotplates:  
 1500W,1000W  
 Oven capacity: 51L  
 Oven power: 3500W  
 Metallic thermograph  
 Iron lid  
 Single warmer glass oven door  
 Packing size: 610\*520\*850mm  
 40'HQ 262pcs



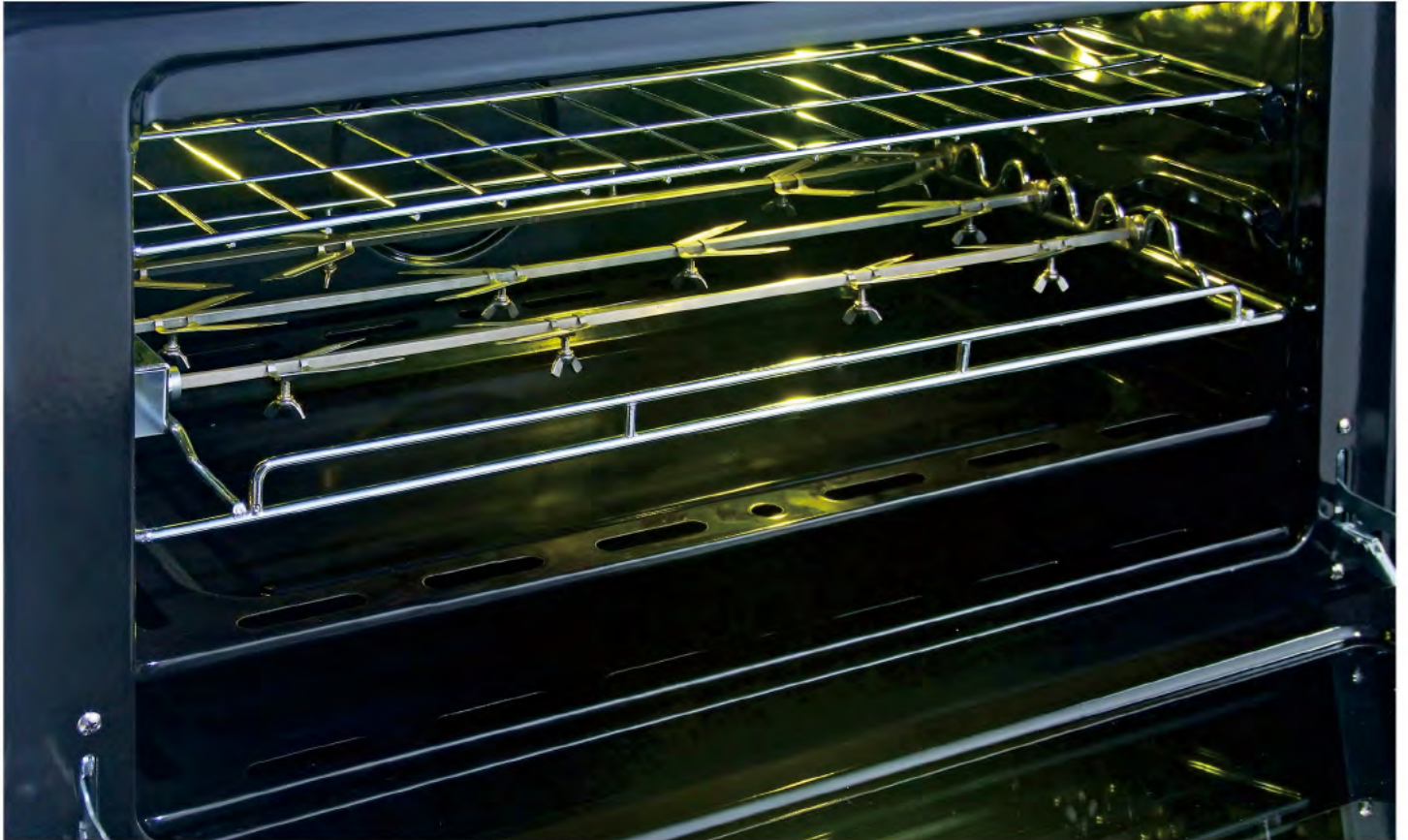
**MODEL: JHL-L500E4**  
 Four electrical hotplates:  
 1500W\*2,1000W\*2  
 Oven capacity: 51L  
 Oven power: 3500W  
 Metallic thermograph  
 Iron lid  
 Single warmer glass oven door  
 Packing size: 610\*520\*850mm  
 40'HQ 262pcs



**MODEL: JHL-510E2**  
 Two copper gas burners:  
 2400W,1800W  
 two electrical hotplates:  
 750W,1000W  
 Oven capacity: 51L  
 Oven power: 3500W  
 Tempered glass lid  
 Double warmer glass oven door  
 Packing size: 480\*560\*870mm  
 40'HQ 286pcs



**MODEL: JHL-510E3**  
 Four electrical hotplate:  
 750W\*2,1000W\*2  
 Oven capacity: 51L  
 Oven power: 2630W  
 Tempered glass lid  
 Double warmer glass oven door  
 Packing size: 480\*560\*870mm  
 40'HQ 286pcs



MODEL: JHL-BEO100  
Oven capacity: 60L  
Oven power: 2050W  
Double warmer glass oven door  
Packing size: 655\*655\*655mm  
40'HQ 260pcs



MODEL: JHL-BEO200  
Oven capacity: 60L  
Oven power: 2050W  
Double warmer glass oven door  
Packing size: 655\*655\*655mm  
40'HQ 260pcs

# RANGE HOOD



## RANGE HOOD



MODEL: JHL-E008-B  
 Material: plastic  
 lighting . halogen 2\*20W  
 Switch: push button  
 Filter: stainless steel filter  
 Air outlet: 150mm  
 Dimension 900mm  
 N.W.: 12kg  
 G.W.: 14kg  
 Air flow: 700m<sup>3</sup>/h  
 Body size: 900\*500\*520mm  
 Packing size: 920\*550\*530mm  
 40'HQ: 400pcs  
 COLOR: Red, Orange, Yellow Wood,  
 Coffee Wood, Silver



MODEL: JHL-E008-W  
 Material: plastic  
 lighting . halogen 2\*20W  
 Switch: push button  
 Filter: 3\*Aluminum panels  
 Air outlet: 150mm  
 Dimension 900mm  
 N.W.: 12kg  
 G.W.: 14kg  
 Air flow: 700m<sup>3</sup>/h  
 Body size: 900\*500\*520mm  
 Packing size: 920\*550\*530mm  
 40'HQ: 400pcs  
 COLOR: Red, Orange, Yellow Wood,  
 Coffee Wood, Silver



MODEL: JHL-E006  
 Material: aisi 430  
 lighting . halogen 2\*20W  
 Switch: push button  
 Filter: stainless steel filter  
 Air outlet: 150mm  
 Dimension 900mm  
 N.W.: 16kg  
 G.W.: 18kg  
 Air flow: 700m<sup>3</sup>/h  
 Body size: 900\*500\*530mm  
 Packing size: (915+385)2x600x480mm  
 40'HQ: 360pcs



MODEL: JHL-E008-W  
 Material: plastic  
 lighting . halogen 2\*20W  
 Switch: push button  
 Filter: 3\*Aluminum panels  
 Air outlet: 150mm  
 Dimension 900mm  
 N.W.: 12kg  
 G.W.: 14kg  
 Air flow: 700m<sup>3</sup>/h  
 Body size: 900\*500\*520mm  
 Packing size: 920\*550\*530mm  
 40'HQ: 400pcs  
 COLOR: Red, Orange, Yellow Wood,  
 Coffee Wood, Silver



MODEL: JHL-E006-3  
 Material: aisi 430  
 lighting . halogen 2\*20W  
 Switch: push button  
 Filter: stainless steel filter  
 Air outlet: 150mm  
 Dimension: 900mm  
 N.W.: 16kg  
 G.W.: 18kg  
 Air flow: 700m<sup>3</sup>/h  
 Body size: 900\*500\*530mm  
 Packing size: (915+385)2x600x480mm  
 40'HQ: 360pcs



MODEL: JHL-E007  
 Material: aisi 430  
 lighting . halogen 2\*20W  
 Switch: touch button  
 Filter: 2\*Aluminum panels  
 Air outlet: 150mm  
 Dimension: 900mm  
 N.W.: 16kg  
 G.W.: 18kg  
 Air flow: 700m<sup>3</sup>/h  
 Body size: 900\*500\*530mm  
 Packing size: (940+410)/2\*600\*525mm  
 40'HQ: 345pcs



MODEL: JHL-E006-SP2  
 Material: aisi 430  
 lighting . halogen 2\*20W  
 Switch: push button  
 Filter: 2\*stainless steel panels  
 Air outlet: 150mm  
 Dimension: 900mm  
 N.W.: 16kg  
 G.W.: 18kg  
 Air flow: 700m<sup>3</sup>/h  
 Body size: 900\*500\*530mm  
 Packing size: (940+410)/2\*600\*525mm  
 40'HQ: 345pcs



MODEL: JHL-E006-S  
 Material: aisi 430  
 lighting . halogen 2\*20W  
 Switch: push button  
 Filter: 2\*Aluminum panels  
 Air outlet: 150mm  
 Dimension: 900mm  
 N.W.: 16kg  
 G.W.: 18kg  
 Air flow: 700m<sup>3</sup>/h  
 Body size: 900\*500\*530mm  
 Packing size: (940+410)/2\*600\*525mm  
 40'HQ: 345pcs

## RANGE HOOD



MODEL: JHL-E006-S1  
Material: aisi 430  
lighting . halogen 2\*20W  
Switch: push button  
Filter: stainless steel filter  
Air outlet: 150mm  
Dimension 900mm  
N.W.: 16kg  
G.W.: 17kg  
Air flow: 700m<sup>3</sup>/h  
Body size: 900\*500\*530mm  
Packing size: (915+385)2x600x480mm  
40'HQ: 360pcs



MODEL: JHL-E006-60  
Material: aisi 430  
lighting . halogen 2\*20W  
Switch: push button  
Filter: 1\*Aluminum panels  
Air outlet: 150mm  
Dimension: 600mm  
N.W.: 16kg  
G.W.: 18kg  
Air flow: 700m<sup>3</sup>/h  
Body size: 600\*450\*530mm  
Packing size: (655+400)/2x540x475mm  
40'HQ: 440pcs



MODEL: JHL-E007-60  
Material: aisi 430  
lighting . halogen 2\*20W  
Switch: push button  
Filter: 1\*Aluminum panels  
Air outlet: 150mm  
Dimension: 600mm  
N.W.: 14.5kg  
G.W.: 16kg  
Air flow: 700m<sup>3</sup>/h  
Body size: 600\*450\*530mm  
Packing size: (655+400)/2x540x475mm  
40'HQ: 440pcs



MODEL: JHL-E007-60S  
Material: aisi 430  
lighting . halogen 2\*20W  
Switch: push button  
Filter: stainless steel filter  
Air outlet: 150mm  
Dimension: 600mm  
N.W.: 14.5kg  
G.W.: 16kg  
Air flow: 700m<sup>3</sup>/h  
Body size: 600\*450\*530mm  
Packing size: (655+400)/2x540x475mm  
40'HQ: 440pcs

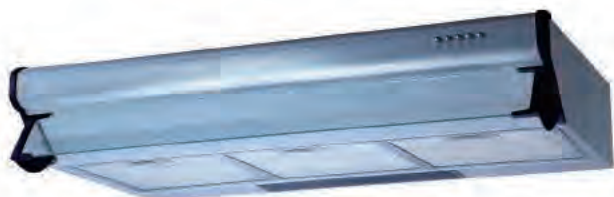




MODEL: JHL-TC91  
 Material: color coating  
 lighting: halogen 2\*20W  
 Switch: push button  
 Filter: 3\*Aluminum panels  
 Air outlet: 150mm  
 Dimension 900mm  
 N.W.: 10kg  
 G.W.: 12kg  
 Air flow: 700m<sup>3</sup>/h  
 Body size: 900\*150\*510mm  
 Packing size: 940\*190\*550mm  
 40'HQ: 700pcs



MODEL: JHL-TC92  
 Material: aisi 430  
 lighting: halogen 2\*20W  
 Switch: push button  
 Filter: 3\*Aluminum panels  
 Air outlet: 150mm  
 Dimension 900mm  
 N.W.: 10kg  
 G.W.: 12kg  
 Air flow: 700m<sup>3</sup>/h  
 Body size: 900\*150\*510mm  
 Packing size: 940\*190\*550mm  
 40'HQ: 700pcs

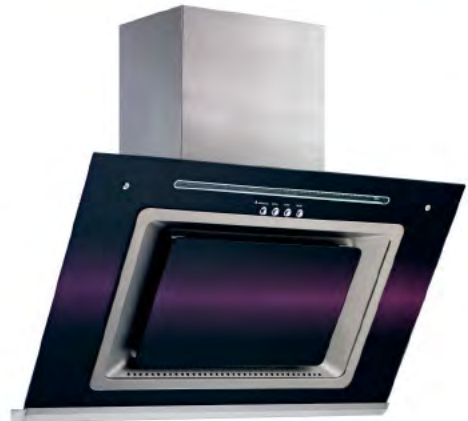


MODEL: JHL-TC90  
 Material: aisi 430  
 lighting: halogen 2\*20W  
 Switch: push button  
 Filter: 3 Aluminum panels  
 Air outlet: 150mm  
 Dimension 900mm  
 Air flow: 700m<sup>3</sup>/h  
 Body size: 900\*150\*510mm  
 Packing size: 940\*190\*550mm  
 40'HQ: 700pcs



MODEL: JHL-TC60  
 Material: aisi 430  
 lighting: halogen 2\*20W  
 Switch: push button  
 Filter: 2 Aluminum panels  
 Air outlet: 150mm  
 Dimension 600mm  
 Air flow: 700m<sup>3</sup>/h  
 Body size: 620\*150\*510mm  
 Packing size: 650\*190\*530mm  
 40'HQ: 850pcs

## RANGE HOOD



**MODEL: JHL-E013**  
 Material: aisi 430  
 lighting: LED 2\*20W  
 Switch: touch button  
 Filter: iron/stainless steel filter  
 Air outlet: 150mm  
 Dimension 820mm~900mm  
 N.W.: 22kg  
 G.W.: 25kg  
 Air flow: 700m<sup>3</sup>/h  
 Body size: 900\*450\*850mm  
 Packing size: 930\*465\*590mm  
 40'HQ: 260pcs

**MODEL: JHL-E014**  
 Material: aisi 430  
 lighting: LED 2\*20W  
 Switch: push button  
 Filter: iron/stainless steel filter  
 Air outlet: 150mm  
 Dimension 820mm~900mm  
 N.W.: 22kg  
 G.W.: 25kg  
 Air flow: 700m<sup>3</sup>/h  
 Body size: 900\*450\*850mm  
 Packing size: 930\*465\*590mm  
 40'HQ: 260pcs



OVEN




RANGE HOOD




STOVE

FOSHAN CITY SUPER ELECTRICAL APPLIANCE CO.,LTD  
JINHUALI HOUSEHOLD ELECTRICAL APPLIANCE CO., LTD

 ADD: No.7-8, Guangming North road, Jiangyi Industrial Park, Leliu Town, Shunde, Foshan, Guangdong, China

 WEB: [www.sdjhl.com](http://www.sdjhl.com)

 E-MAIL: [jhl@sdjhl.com](mailto:jhl@sdjhl.com)

 TEL: +86-757-2566 8381 / 2566 8382